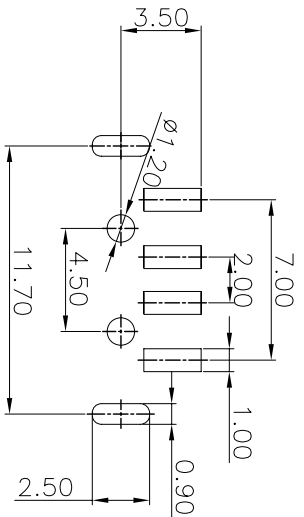
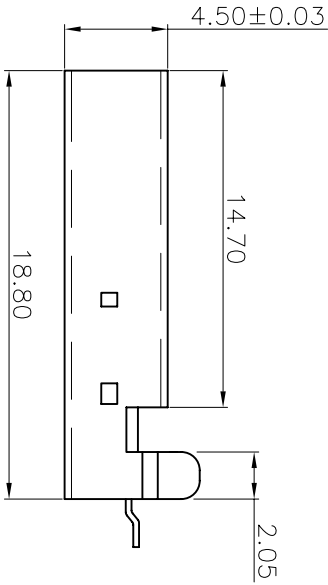
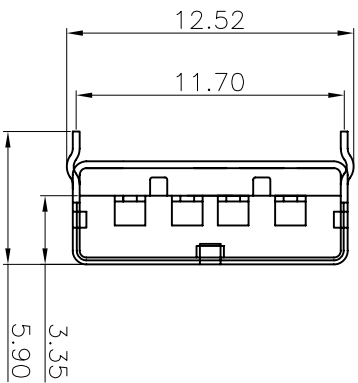
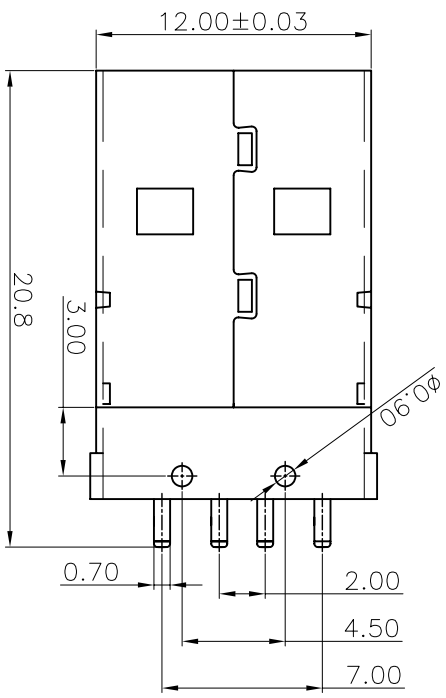


REV.	ECH. NO.	APPD.
A	/	pcy

NOTES:

1. MATERIAL:
- 1.1 Housing:thermoplastic plastics
 - 1.2 terminals:Copper Alloy
 - Gold plated in contact area
 - Tin plated in termination
 - Nickel Plated overall
 - 1.3 Shell:Steel&Copper Alloy
 - Nickel Plated overall
2. ELECTRICAL CHARACTERISTICS:
- 2.1 Rating Current :1.5 Ampere
 - 2.2 Rating Voltage :30 V Max
 - 2.3 Contact Resistance:30 Milli ohms
 - 2.4 Insulation Resistance:1000 Mega ohms Min.
3. MECHANICAL CHARACTERISTICS:
- 3.1 Connector Mating force: 35N MAX(3.57Kgf)
 - 3.2 Connector Unmating force:10N min(1.02Kgf)
 - 3.3 Durability:15000Cycles.
4. ENVIRONMENT CHARACTERISTICS:
- 4.1 Operating temperature:-0°C to +50°C
 - 4.2 Storage temperature:-20°C to +60°C



PCB LAYOUT

- U212-012X-XXXXXR
- 1:Iron alloy
 - Ni plating
 - 5:Copper alloy
 - Ni plating
 - 1: Au 1u"
 - 3: Au 3u"
 - 5: Au 5u"
 - 7: Au 10u"
 - 8: Au 15u"
 - A: Au 30u"
 - 1: tray
 - 2: Tube
 - 8: Tape&Reel
 - 9: Tape&Reel+Mylar
 - 1: Black
 - 2: White
 - 3: Beige
 - N: Pure White
 - 1: PA66
 - 2: PBT
 - 6: LCP

弘轩电子有限公司

TOLERANCE UNLESS OTHERWISE SPECIFIED		PART NAME:	
XXX ±0.10	X ±3	USB AM SMT	
XX ±0.20	.XX ±2		
X ±0.30	.X ±2		
APPROVED		PART No:	U212-012X-XXXXXR
CHECKED		PROJECTION:	
DRAWN	pengchaocong	UNIT:	mm
DATE	2015.03.03	SCALE	1:1
		SHEET	10F1
		REV.	A

A

B

C

D

E

F

A

B

C

D

E

F

9 8 7 6 5 4 3 2 1